



**Sarawak Children's  
Cancer Society**

Pertubuhan Kanser Kanak-Kanak Negeri Sarawak

SARAWAK CHILDREN'S CANCER SOCIETY

# Annual Activities Report 2022



# WHO WE ARE

In 1999, a group of parents of children with cancer came together to discover ways they could support one another. On 26 November 2001, Sarawak Children's Cancer Society (SCCS), a non-profit organisation established to meeting the needs of families of patients diagnosed with paediatric cancer, was formally registered.

With a committee made up of 70% parents and 30% volunteers, we understand the need of these families that we serve during this uncertain time because we have been there ourselves. We are families supporting other families, with the hopes of providing some relief, care and support during this challenging period.

SCCS recognises the complexity of the paediatric cancer experience, and we understand that childhood illness affects every aspect of the lives of patients, siblings, and caregivers. As such, SCCS adopts a holistic approach in supporting families.

With the support of patients and families, SCCS also grows public awareness of childhood cancer through fundraisers and educational campaigns.

Since 2001, SCCS has supported more than 1,500 families across Sarawak. Together with the support of the community, the society looks forward to expanding and growing its services to provide better care and relief for the families along this journey.





## VISION

Every Malaysian child with cancer will have access to the best available treatment and support

## MISSION

The Sarawak Children's Cancer Society has been established for the relief and care of Malaysian children suffering from cancer and their families irrespective of race, religion, and creed; and the advancement of research and public education in the prevention, control, diagnosis, and treatment of childhood cancer.

# AREAS OF IMPACT



## SUPPORT

From counselling sessions, palliative care home visits, wish granting, bereavement to post bereavement support;

SCCS comes alongside families and becomes that additional hand of support to walk alongside with them through this difficult journey.



## ACCOMMODATION

SCCS has 2 halfway homes that are fully equipped with amenities that provide free lodging, food and transportation for outstation patients receiving treatment in Sarawak General Hospital, Kuching and Miri General Hospital.

Every year, the Kuching halfway home accommodates more than 40 children and caregivers.



## FINANCIAL ASSISTANCE

To assist with the cost of caring for a child with cancer, SCCS provides monetary assistance to patients and families demonstrating financial need.

Financial aid includes monthly financial subsidies, travel reimbursement, expenses, monetary or items donations, bereavement assistance and need-based provision of medical subsidies.



# AREAS OF IMPACT



## MEDICAL SUPPORT

SCCS sponsors medical consumables and donates medical equipment not provided in Sarawak's government hospitals. This includes certain medications, blood filters, central venous lines and prosthetic devices.

The Society also helps to subsidise or pay for the cost of need-based medical subsidies for important medical treatments to children who otherwise would not be able to afford them.



## EDUCATION

SCCS holds talks and organises campaigns to educate the public about cancer and the stigmas often attached to it.

To improve the services provided to the patients, SCCS sponsors various medical staff and staff team of SCCS to attend relevant workshops and conferences.

In 2018, in collaboration with Malaysia Stem Cell Registry, SCCS started a stem-cell donor drive with the hopes of increasing the chances of cancer patients to find a match.



## RECREATION

SCCS organises monthly birthdays, festivities celebrations, annual family days and youth camps for childhood cancer survivors, to entertain and engage the children.

These activities provide a space for them to rest and rejuvenate their mind.





## 2022 SERVICES OVERVIEW

- Transitioning from pandemic to endemic, 2022 saw more physical engagements between staff and families.
- Resumed clinic day activities, various activities at the ward and centre.
- Wednesday breakfast for Wednesday clinic days and also meals distribution at other hospitals.
- Custom Care pack bags to help patients adjust to life at the ward



# MEET OUR NEW TEAM MEMBERS



**LEE MING MING**  
Manager of Support  
Services



**WONG SHU SHAN**  
Support Services  
Executive- Counselor



**TRISHA WEBLEY**  
Support Services  
Executive



**MADELEINE ANG**  
Marketing &  
Communications Senior  
Executive



**BOON SIAW YING**  
Events & Marketing  
Executive



**GRACILLA CLARESA**  
Centre Coordinator

# MEMBERSHIP

**2022**      **2021**

LIFE MEMBERS	518	486
ORDINARY MEMBERS	122	69
ASSOCIATE MEMBERS	944	948
<b>TOTAL</b>	<b>1,584</b>	<b>1,503</b>

**2022**      **2021**

SOUTHERN	839	787
NORTHERN	344	335
CENTRAL	345	325
OTHERS	56	56



# CASELOADS

	2022	2021
NEW ADMISSIONS TO WARD 2A	58	77
RELAPSE	7	6
PALLIATIVE CASE		16
BEREAVED CASE	13	19



# SUPPORT SERVICES

	2022	2021
PARENT CARING SESSIONS	1301	1279
NO. OF PARENTS SUPPORTED	120	142
HEART TO HEART SESSIONS	121	182
NO. OF YOUTHS SUPPORTED	52	24
TOKEN OF LOVE DISTRIBUTED	56	72



# MEDICAL SUPPORT

**RM459,425**

spent on sponsorship of medical procedures, drugs, consumables, lab tests, prosthesis, walking and hearing aids

**51 patients**

received sponsorship for lab test, medicine and drugs

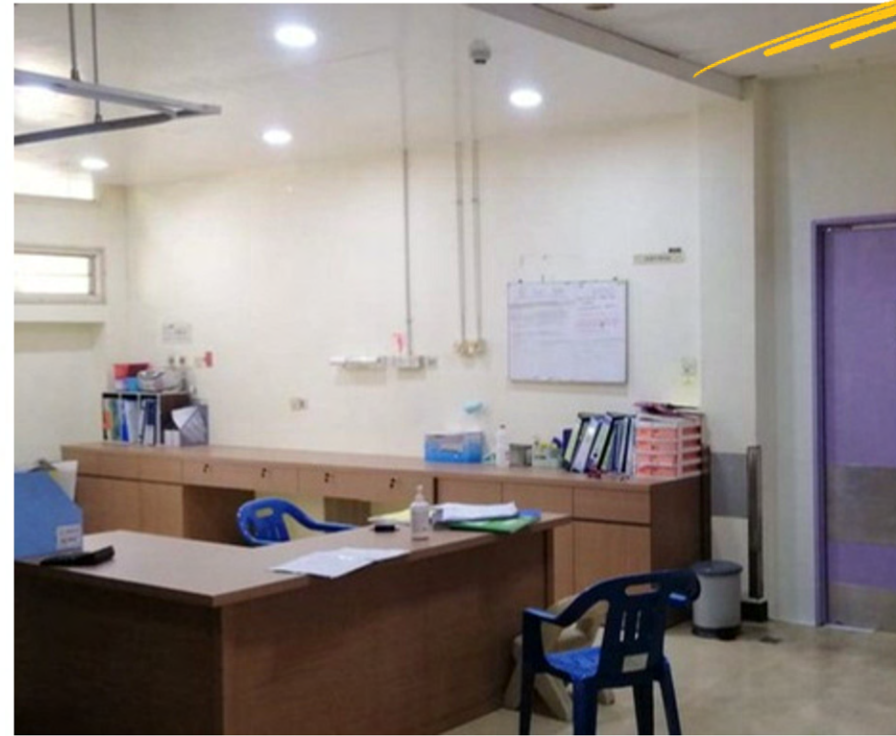


# DONATION TO HOSPITAL



## SARAWAK GENERAL HOSPITAL

Donation of Medical  
equipment to  
Paediatric ward 2A  
worth **RM 88,656**



## SIBU GENERAL HOSPITAL

Donation of 1 HEPA filter and  
sponsorship of daycare  
construction at Paediatric  
Oncology ward worth **RM 49,306**



## MIRI GENERAL HOSPITAL

Donation of 6 units of  
Air conditioners & 1 LED  
TV to daycare, clinic  
and treatment room  
**RM 24,890**

# PLAYROOM UPGRADING



Playroom upgrading project was supported by Region 1 Lions Club. The room doubles up as an office space for the support services department and a play area for children who are residing at the centre. It is also used as a counselling room for caregivers.

# PALLIATIVE & BEREAVEMENT SUPPORT



**72**

palliative care  
caring sessions  
carried out

**2**

families received  
monthly comfort  
aid

**13**

families  
supported with  
bereavement

**8**

families received  
post bereavement  
emotional support

**20**

post bereavement  
caring sessions  
carried out



# WISHING STAR PROJECTS



**9** wishes were granted in 2022



# SCCS

## HALFWAY HOME

**31 Families stayed at Kuching  
halfway home.**

Southern-3

Northern-8

Central -11

1,788 nights provided

**RM 182,924** was spent on managing  
two halfway homes in 2022.

No residents in Miri Halfway home in  
2022.

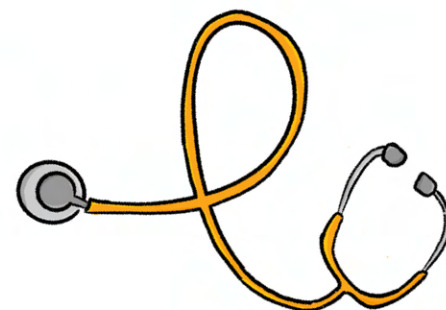


# FINANCIAL AID



## Monthly Financial Subsidy

**38** families supported, amounting to **RM108,700.**



## Transportation Subsidy

**46** families supported, **219** trips for checkup and treatment were subsidised costing **RM 48,328.**



## Items Aid

**352** packs of diapers were distributed to **34** families.



# CELEBRATIONS AND RECREATIONAL ACTIVITIES



**114** children celebrated their birthday



**4** festivities celebrated by way of meals, angpows and goody bag distributions

**374** recreational activities were organised, participated by **117** children and **27** caregivers at the halfway home and ward



# TRAINING & DEVELOPMENT

11 workshop/conference/trainings sponsored for:

- 17 medical staff
- 13 SCCS staff
- 7 committee members
- 1 SCCS member



**Only One Thing Stands Between You & Success!**  
It isn't experience. It isn't talent. If you want to succeed, you must learn how to **CONNECT with PEOPLE**. And while it may seem like some people are just born with it, the fact is anyone can learn how to make every communication an opportunity for a powerful connection.

**Everyone Communicates Few Connect**  
What the Most Effective People Do Differently

*In this virtual seminar, you will learn*  
How to identify with people and relate to others in a way that increases your influence with them. To be a successful leader, you need to learn to communicate in a way that connects with others.

**Professional Development & Leadership Training**  
*based on the book by John C. Maxwell*

*Your Virtual Facilitator*  
**Poh Teck Lim** B.B.S., CPTD®  
Certified Speaker, Trainer, and Coach by John C. Maxwell | International Speaker | Trainer | Coach | Facilitator | Author  
Teck Lim is a leadership growth expert committed to *Inspiring Human Excellence* through coaching and enabling individuals and teams to take their leadership and life to the next level and make an impact through positive influence. Since 1992, He has delivered training and presented at conferences on leadership and personal effectiveness in over 24 countries.  
[www.PohTeckLim.com](http://www.PohTeckLim.com)

**Team**  
JOHN MAXWELL  
CERTIFIED MEMBER




SIOP ASIA CONFERENCE 2022  
Guangzhou · China  
29-31 July, 2022-online

Logos: SIOP, SIOP ASIA CONFERENCE, Sarawak Children's Cancer Society, and others.



# PUBLIC AWARENESS & EDUCATION

4 public talks - 334 Reach  
5 press releases  
9 newsletters

## Awareness projects involved :

- Childhood Cancer Awareness Month
- International Childhood Cancer Day
- Childhood Cancer International (Asia) Conference





Social media engagement activity

Gold Ribbon Sculpture Competition and 1-day awareness event at Vivacity Megamall

Gold ribbon sculptures are currently on display at the MBKS building

# VISIT FROM FOUNDERS OF PAU KWONG WUN FOUNDATION (HK)/ HEAD OF CCI ASIA



# CSR PROJECTS

86 CSR Projects

Funds raised from CSR - **RM 1,477,650**

*Note:*

*RM 1,000,000 donation from Bald & Beautiful 4.0 event  
(My Starfish Foundation)*





## 7 SATELLITE SHAVES



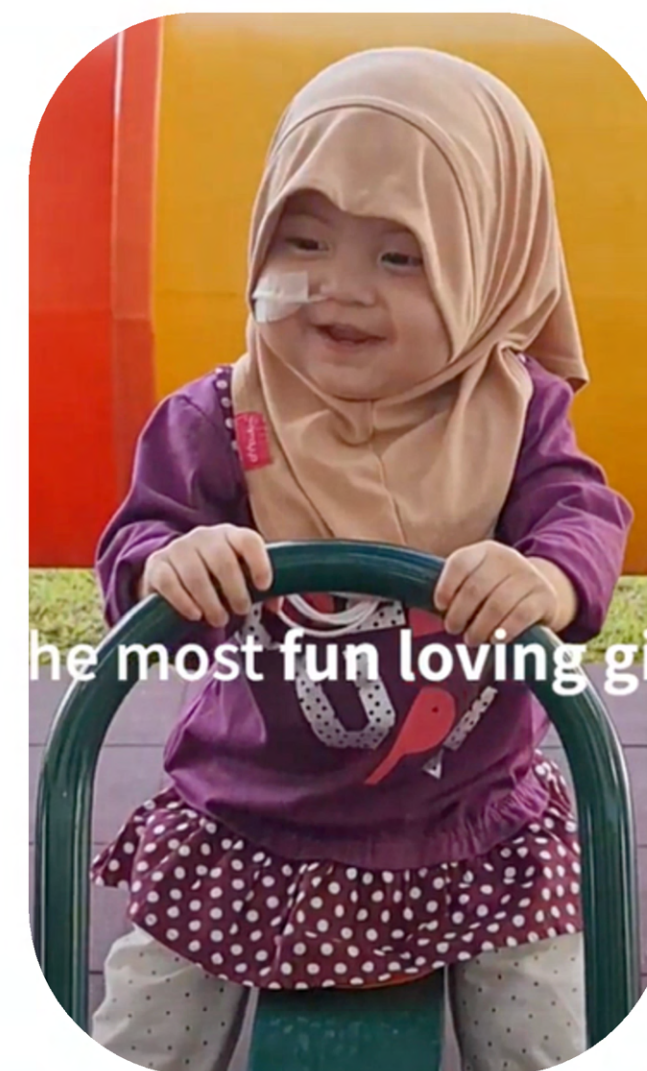
	2022	2021
HEADS SHAVED	283	126
FUNDS RAISED	RM824,107	RM643,684



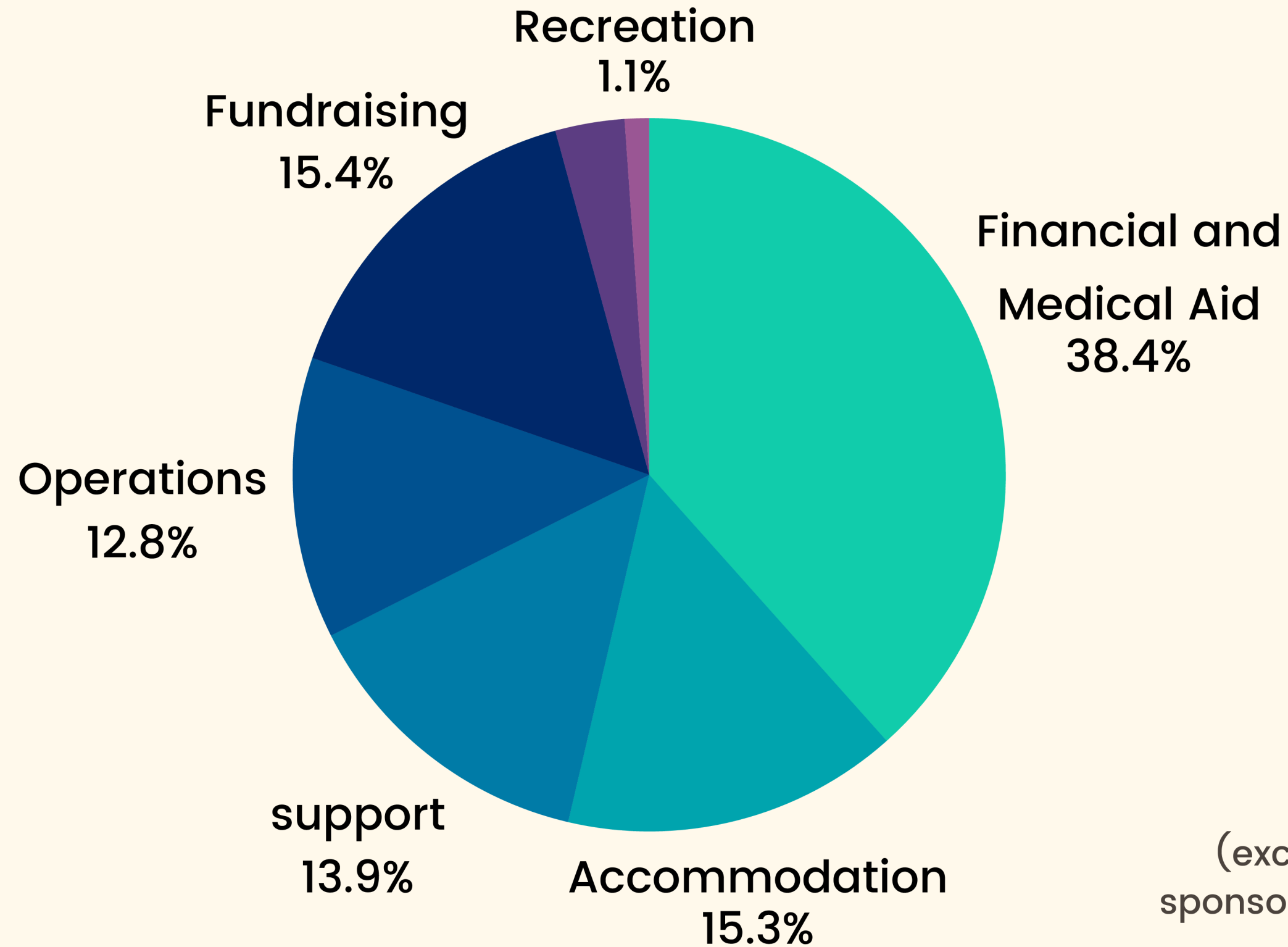
# HEART OF GOLD

Monthly Donation Program

	2022	2021
NEW SIGN UPS	335	551
DONATION	363,395	346,479



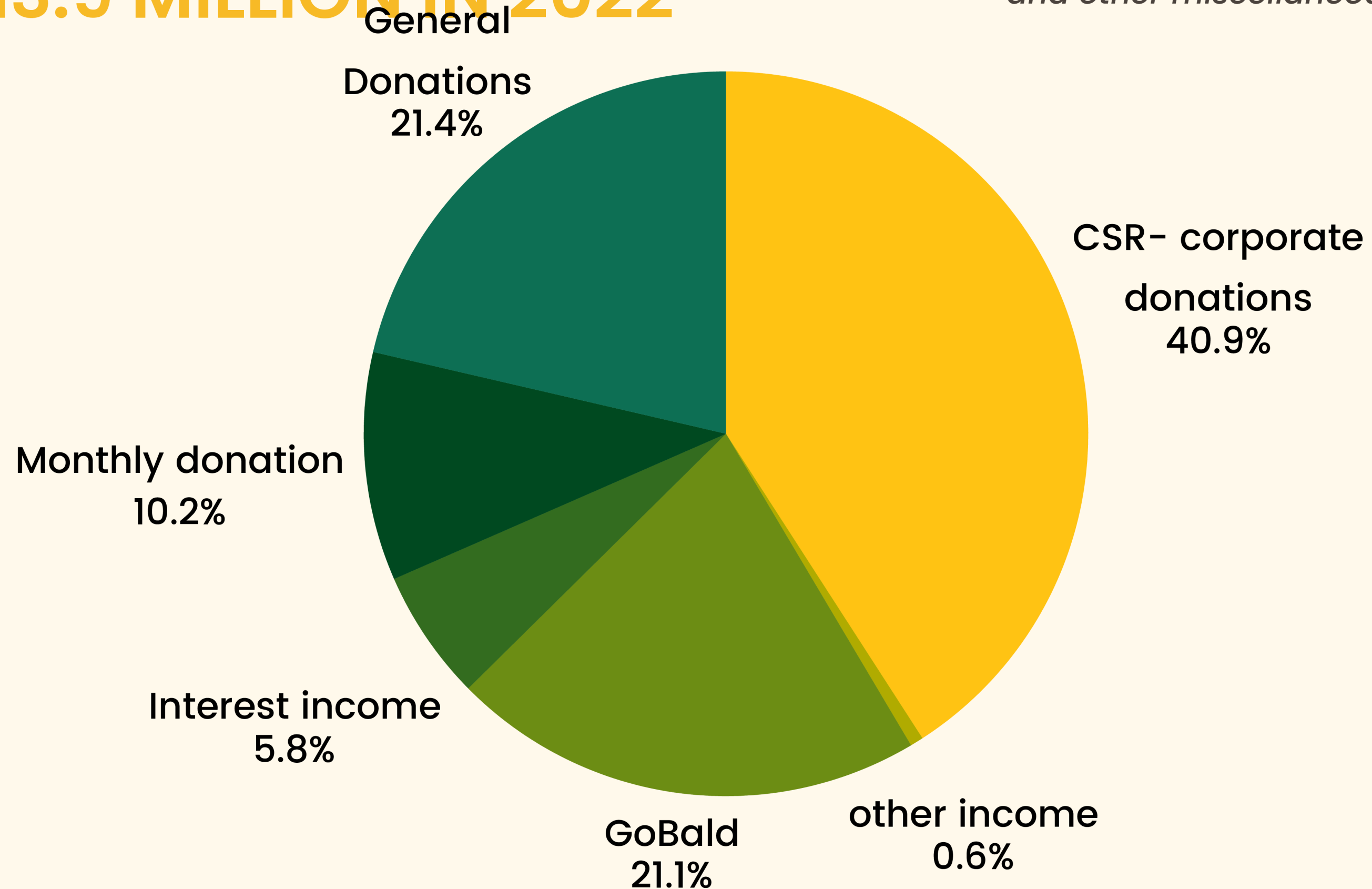
# TOTAL EXPENDITURE RM1.97 MILLION IN 2022



(excludes expenses covered by sponsorships and donations in kind)

# TOTAL INCOME RM3.9 MILLION IN 2022

*Other income sources include:  
membership fee, merchandise sales  
and other miscellaneous*





THANK YOU



Sarawak Children's  
Cancer Society  
Pertubuhan Kanser Kanak-Kanak Negeri Sarawak

